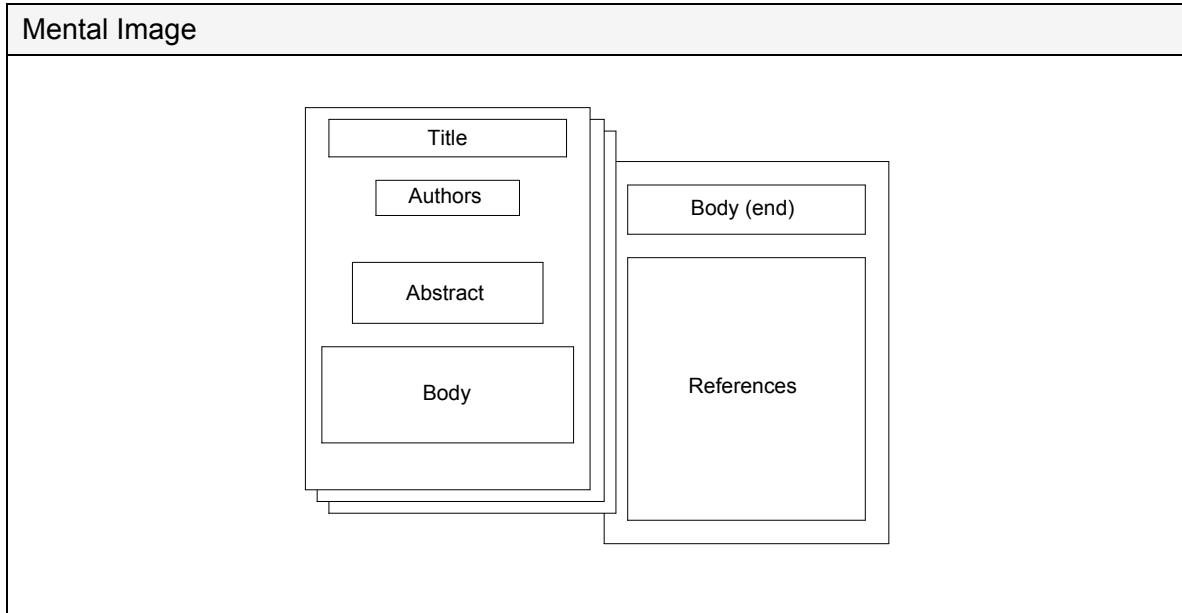


User's Mental Model: Article

This model is from the perspective of a scientist looking up an article on a publisher web site.



Related Mental Models

Component Models

- Citation
- Author
- Abstract
- Reference
- Table/Figure

Models That Use This Model

- Journal
- Reprint
- Literature Review

Key Assumptions

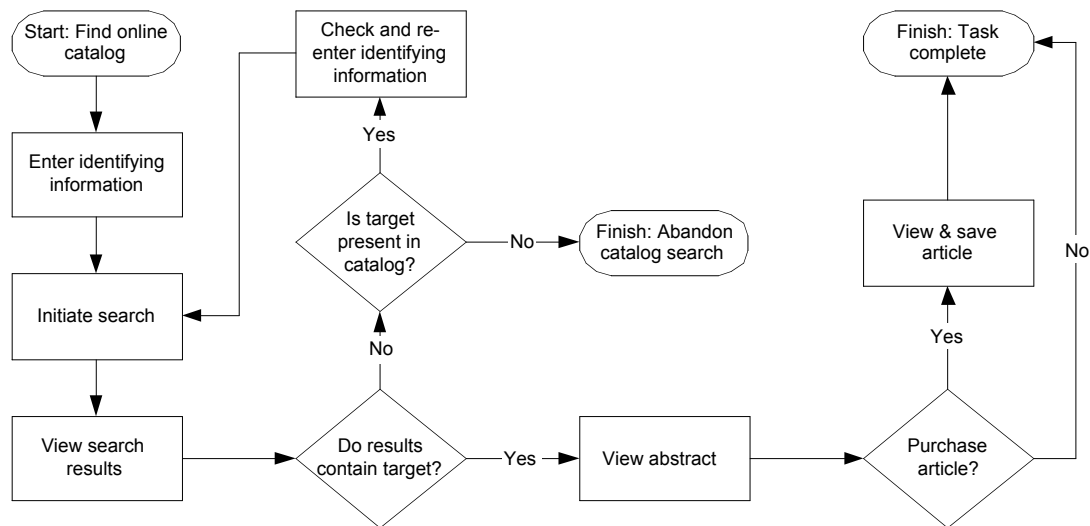
- Articles are peer reviewed and published in scientific journals.
- Articles are first published in the journal and are later available online from the publisher's web site.
- Articles are available in a publisher's online database.
- When searching for articles, the full text of the article's body is no different than the article's meta-data.
- Paying for individual articles or valuable lists of articles is a reasonable business expense.

Key Terms

- *Article*: A presentation of the results of a scientific inquiry or analysis. (NT: review article)
- *Review Article*: A type of article that does not report experimental data but rather provides summary and analysis of a field of inquiry based on other articles. (BT: article)
- *Title*: A specific, descriptive name of an article.
- *Author*: A person who contributed to the scientific findings described in an article.
- *Citation*: An article's complete publication information. (NT: reference, forward citation)
- *Reference*: Citation for another article that are referred to in the current article. (BT: citation)
- *Forward Citation*: The citation of an article that has used the current article as a reference. (BT: citation)
- *Endnote*: An in-text indication of a reference.
- *Abstract*: Short paragraph that summarizes an article's findings. Abstracts are used to determine whether or not to read articles.
- *Introduction*: General explanation of the topic, justification for research, and presentation of hypotheses.
- *Conclusion*: Analysis and interpretation of the findings.
- *Table*: Tabular display of data.
- *Figure*: An illustration, often a graphical display of data.
- *Reprint*: Print-quality paper reproduction of an article, usually obtained from an author or a publisher.

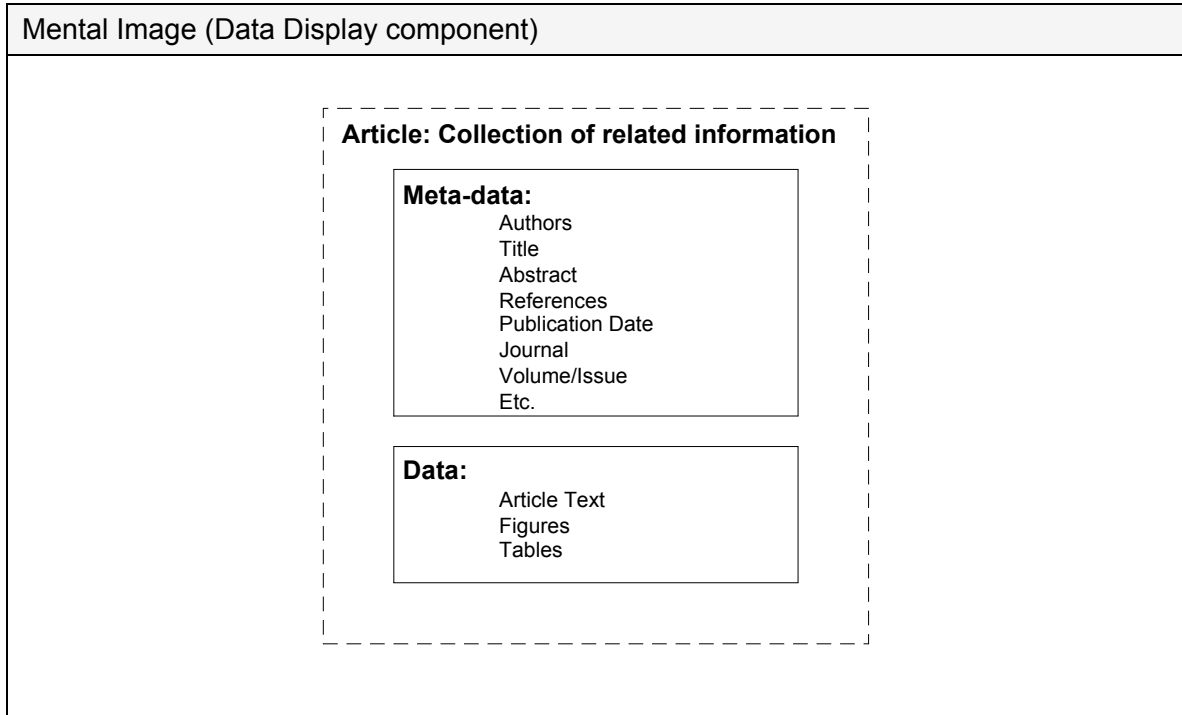
Script

This script shows the process of searching for and purchasing a specific article in an online system.



Designer's Mental Model: Article

This model is the designer's mental model of an article and its storage in the system.



Related Mental Models
Component Models
▪ Meta-data
▪ Data
▪ Author
▪ Abstract
▪ Reference
▪ Table/Figure
▪ Access (who can view article)
Models That Use This Model
▪ Journal
▪ Literature Review

Key Assumptions
▪ Articles are peer reviewed and published in scientific journals.
▪ Articles appear online at the same time they are published in the paper journal.
▪ An article's meta-data is available in one database and its data is available in a separate database. (This is a technical constraint.)
▪ Paying for individual articles or valuable lists of articles is a reasonable business expense.

Key Terms

- *Article*: A scientific paper, published in a journal.
- *Meta-data*: Information about the article that is not the article itself. (NT: title, author, references, forward citations, abstract, publication date, journal title, journal volume, journal issue [note: not all shown here])
- *Data*: The content of the article itself. (NT: section)
- *Title*: A specific, descriptive name of an article. (BT: meta-data)
- *Author*: A person who contributed to the scientific findings described in an article. (BT: meta-data)
- *References*: Publication information for other articles referred to in the current article. (BT: meta-data)
- *Forward Citations*: References for articles that have used the current article as a reference. (BT: meta-data)
- *Endnote*: An in-text indication of a reference.
- *Abstract*: Short paragraph that summarizes an article's findings. Abstracts are used to determine whether or not to read articles. (BT: meta-data)
- *Section*: Part of an article that must be formatted as a unit. Examples: Introduction, Conclusion. (BT: data)
- *Table*: Tabular display of data.
- *Figure*: An illustration, often a graphical display of data.
- *Access*: The set of user characteristics that determine whether specific users can view or save an article.

Script

This script shows the process of searching for and purchasing a specific article in an online system.

